

IPTV Multi Stream Generator



IPG500 >

Overview

IPTV Multi Stream Generator(IPG500) is a professional and powerful solution adapting MPEG DTV signals for streaming across IP networks.

IPG500 is a professional and powerful solution adapting MPEG DTV signals for streaming across IP networks. **IPG500** supports Gigabit output interfaces (Copper & Fiber). Extensive set of optional interface cards are available for your test and development.

IPG500 has some special features for IPTV set-top box manufacturing and developing as below.

- Automatic TS verification : Before transmitting, broken TS will be verified and removed automatically.

In a Lab environment, **IPG500** is the most flexible solution for setting-up IPTV signal environment your engineers need. With various Ethernet output interfaces, manufacturers can easily set up manufacturing lines for IPTV and IP set-top box. With User-friendly configuration and GUI, user can control and test IPTV streaming with support for UDP.

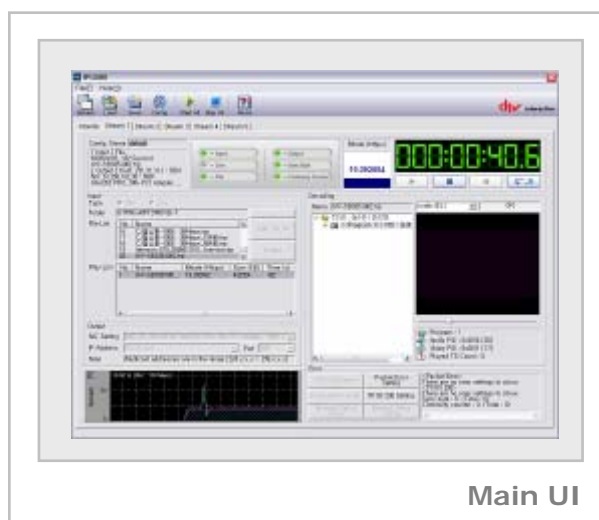
Features

Multi Signal Generation

- In the case of MPTS
 - Total No. of generating stream : 10
 - Output Bitrate : Max. 300Mbps
 - Each stream size : 30Mbps~120Mbps
- In the case of SPTS
 - Total No. of generating stream : 10
 - Output Bitrate : Max. 200Mbps
 - Each stream size based on MPEG2/H.264 HD: 10Mbps ~ 19Mbps
 - Each stream size based on MPEG2/H.264 SD: 4Mbps ~ 6Mbps
- Network Delay Simulation
(Delay Type: Sin, Square, Triangle, Sawtooth, Random)
- Support Error Injection
(Error Type: Lost packet, Bit Error, Byte Error Injection)
- Decoding View
- TR101 290 TS Error Injection
(Error Type : Sync Byte, TS Error Indicator, TS Scrambling Ctrl, Continuity Counter, CRC)
- MPEG2 Over IP TS Streaming (UDP, RTP)
- 10M/100M/1Gigabit Ethernet Output Interfaces
- ASI to Ethernet Generation
- TS Recording (ASI Input)
- Total Output Status list
- Automatic Bit rate Calculation
- Change Sending Group Packets
- User Friendly Configuration Setting

Intended Application

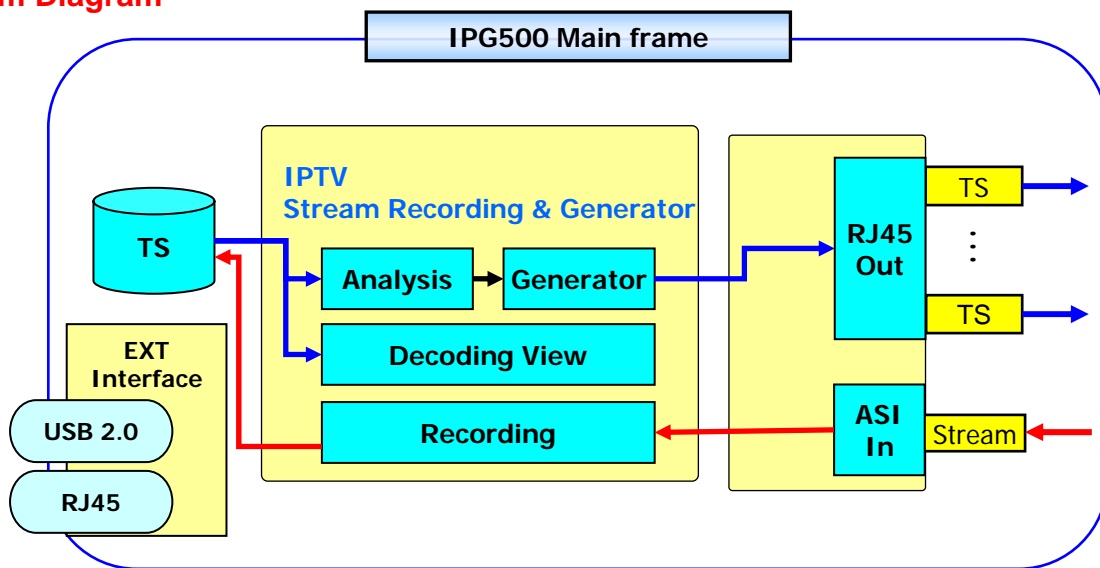
- IPTV
- Broadband TV
- TV Over ADSL VDSL
- IPTV Set-top Box
- Home Networking



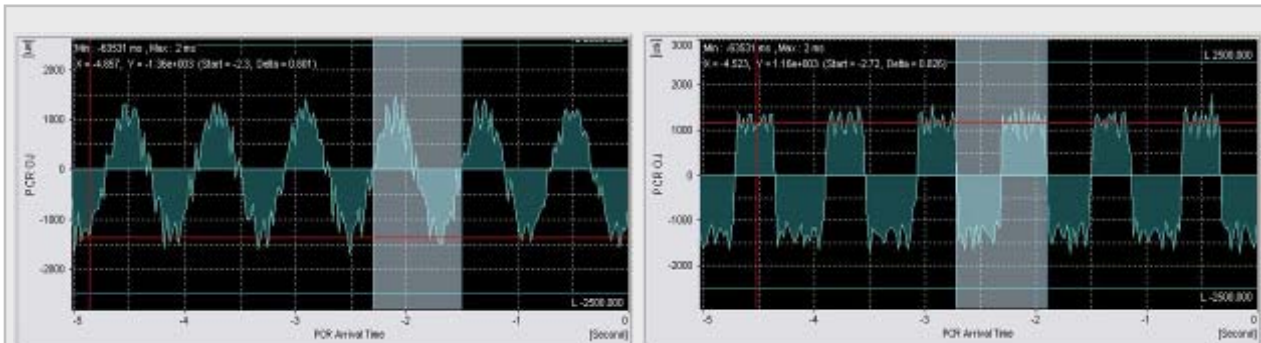
Main UI

IPTV Multi Stream Generator

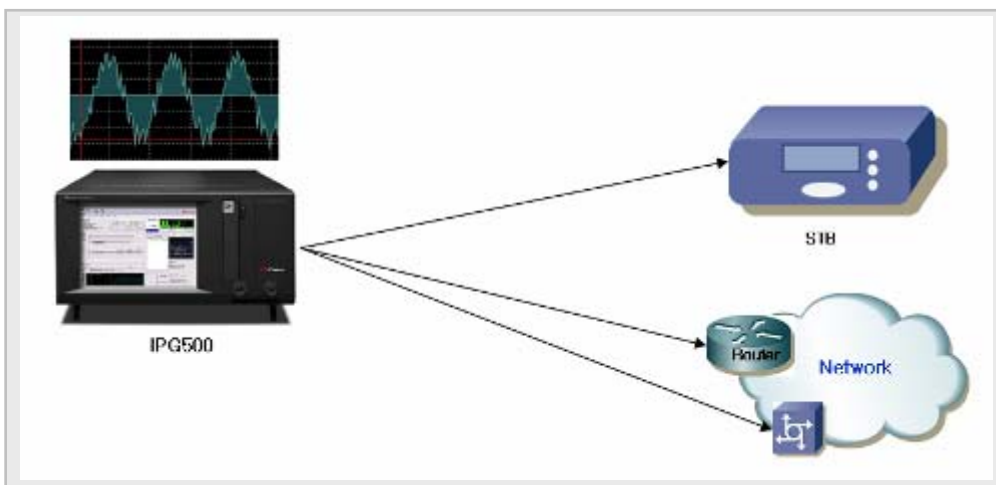
System Diagram



User Interface



Network Delay Generation



Whole Connection Structure

IPTV Multi Stream Generator

Specifications

Operating Specifications

- Power supply : AC 100 to 240V, 50/60Hz
- Power consumption : Less than 400W
- Operating temperature : 10 to 40 °C
- Operating humidity : 20 to 85% RH (No Condensation)
- Guaranteed temperature : 15 to 35 °C
- Guaranteed humidity : 20 to 85% RH (No Condensation)
- Storage temperature : -40 to +70 °C / 20 ~ 85% RH
- Operating environment : Indoor
- Operating attitude : Around 2000m
- Over-voltage category : II
- Pollution degree : 2
- Dimensions : 435(W) x 231.8(H) x 519.7(D) mm
- Weight : Approx. 17kg (without options)

Function Options

- GPIB Module (FM-202)
- IEEE 488.2

OS system

- Embedded OS

User interface system

- 10.4 inch TFT color LCD (1024 x 768)
- Touch Screen

External Interface system

- USB Interface : USB HDD, USB Stick
- Remote Control : Ethernet, GPIB (Optional)

Ordering Information

Base Model	Description
IPG500	IPTV Multi Stream Generator * Ethernet (10/100/1000M)

Options	Description	Notes
Option	FM-202	GPIB Module
	EF-303	Option Upgrade
		* When a client selects additional option after purchasing product, all units should be returned to the factory.

* All Specifications and Features are subject to be changed without notice